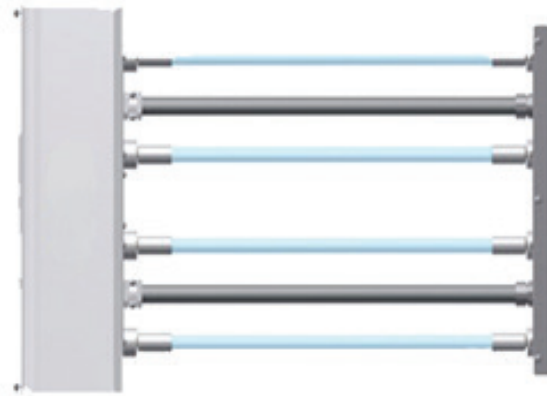
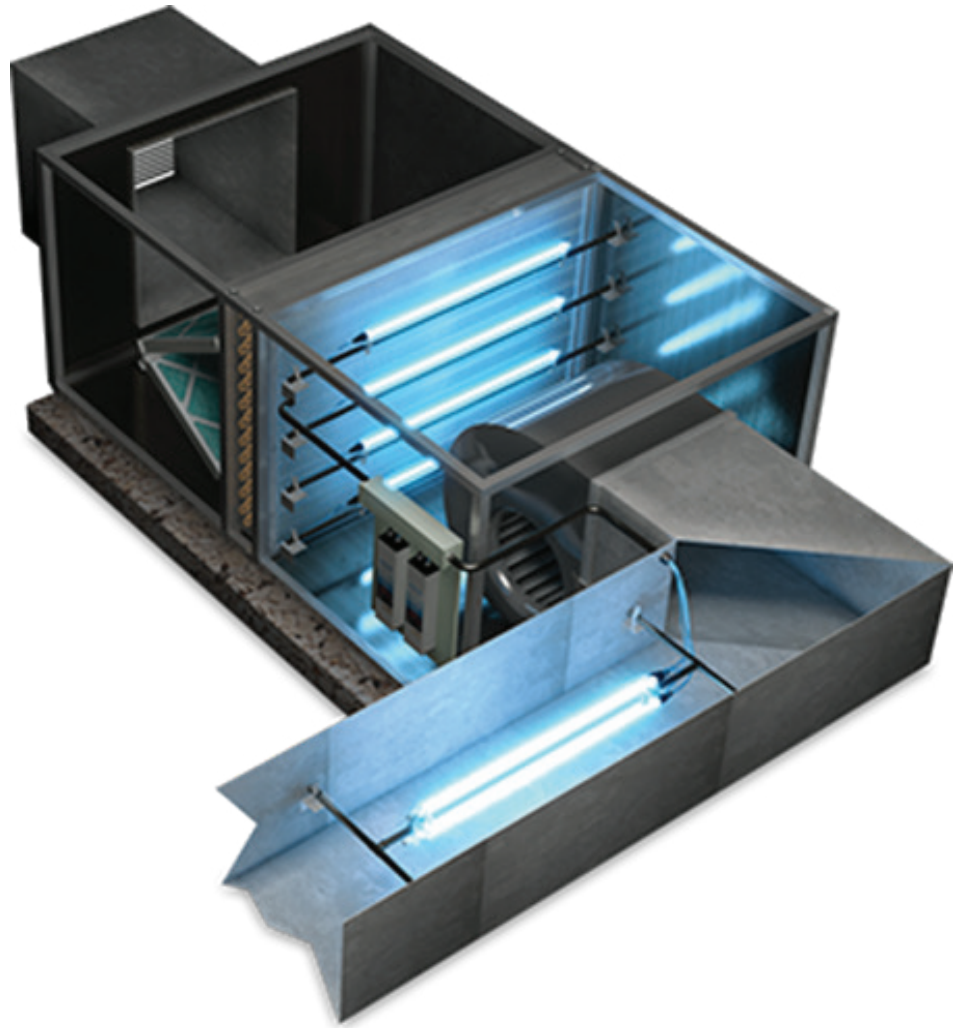


In-Duct  
Ultraviolet Light  
Disinfection

# AIRGLOWX



 **ClorDiSys**



# AirGlow™

## HVAC Ultraviolet Light (UV-C) Disinfection

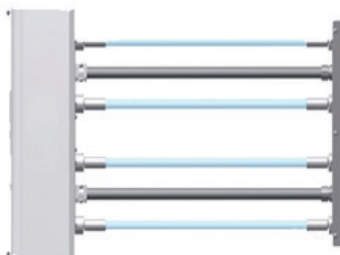
Ultraviolet light is a specific part of the electromagnetic spectrum of light that offers bactericidal effects. Ultraviolet light is divided into UV-A, UV-B and UV-C rays. It is the wavelengths in the UV-C spectrum, specifically 265 nm, which offer the greatest germicidal potential. When a micro-organism is exposed to UV-C, the nuclei of the cells are altered due to photolytic processes. This process prevents further replication and causes cell death.

AirGlow is an in-duct ultraviolet light disinfection system that can be installed in any HVAC system. The AirGlow can help reduce and/or eliminate the growth of bacteria, mold and spores. It can also prevent the spread of airborne cold and flu viruses as well as other airborne transmitted diseases. As air passes by the quartz glass bulbs of the AirGlow, the travelling air is disinfected, and harmful organisms that may have been present are killed.

---

### FEATURES

- Available in 120 or 230 volts, 50/60 Hz, and a variety of sizes
- Constructed of corrosion-resistant Stainless Steel
- UV-C lamps reduce or eliminate the growth of bacteria, mold and spores
- Continuous disinfection without risk of exposure to people in the room
- Efficient lightweight electronic ballast
- Low maintenance



## SPECIAL FEATURES

# AirGlow™

The AirGlow can be utilized for two distinct purposes. To reduce or eliminate airborne organisms, the AirGlow would be positioned parallel to the airflow to maximize contact time on the organisms. To improve energy efficiency, the AirGlow would be positioned parallel to the cooling coils. Used in this configuration, biofilm production on the coils is prevented or reduced, in turn, limiting the decrease in both heat transfer and airflow.

### STER-L-RAY® High Output Germicidal Ultraviolet Lamps

High Output (HO) germicidal lamps yield more UV watts than standard UV-C lamps of the same length.

### ArmorLite™ Safety Shield

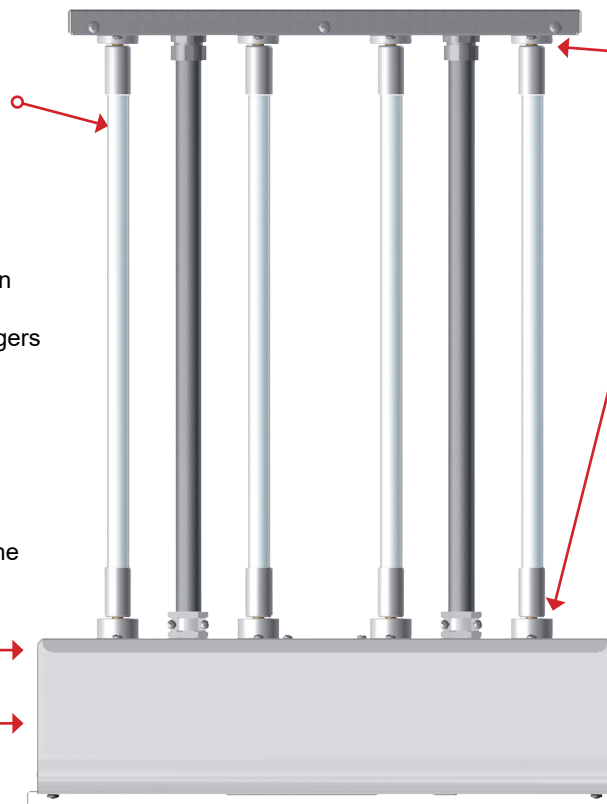
Protective coating can be applied to **STER-L-RAY®** Germicidal Lamps used in the **AirGlow** **Air Duct Models** to ensure protection for employees, products and work environments by eliminating the dangers associated with fragments of broken lamps and mercury contamination.

### Construction

Designed for use in demanding applications; the ballast housing of the **AirGlow Air Duct** are constructed in Type 304 Stainless Steel.

### Surelite™ Ballasts

State-of-the-art electronic ballasts specifically developed for the operation of ultraviolet lamps. Versatile, instant start ballast provides higher lamp output; are smaller, lighter, more efficient, and operate cooler for longer life.



Model AirGlow-24-4

The following information is required to size an AirGlow for duct air treatment:

- Duct or plenum size
- Length of compartment or duct with AirGlow would be installed
- Air speed typically provided in cfm (cubic feet per minute)
- Approximate air temperature

### Steadfast™ Lampholders

Single pin lampholder set (includes one stationary end and one spring end) holds lamp(s) securely while providing convenient, "quick and easy" lamp change.

### Promate™ Observation Port / Sight Glass Assembly & Mounting Hardware (included)

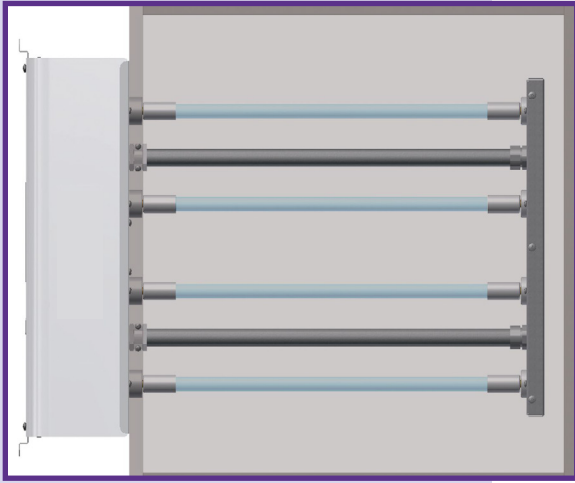
A Sight Glass Assembly allows for visual inspection of the lamps, without the need to remove the **AirGlow** from the duct.

**Lamp Operation Indicators (LEDs)** Provide positive indication of each germicidal lamp operation.

### SENTINEL™ Output Connector

**Mounting Hardware (included)**

# INSTALLATION



Partial Internal Mount - Lamps installed inside and ballast enclosure on outside of duct.

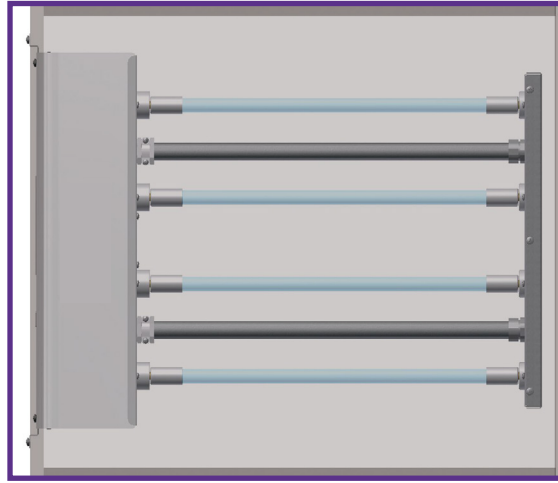
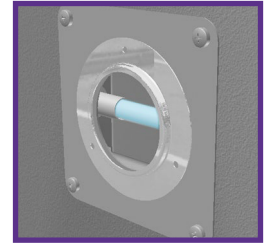


Figure 3

Full Internal Mount- Whole model installed within duct.



**Promate™  
Observation Port/  
Sight Glass Assembly**  
A Sight Glass Assembly allows for visual inspection of the lamp, without the need to remove the AirGlow® from the duct.

## SPECIFICATIONS—AirGlow 4-LAMP COMMERCIAL AIR DUCT MODELS

Model	Lamp ①	Lamp(s) Watts ②	Total Ultraviolet Output ③	Depth (Inside Duct) ⑤		Exterior Housing Dimensions		
				Partial Internal	Full Internal	Height	Width ④	Depth
AirGlow-18-4	05-0687 (4)	160.0 Watts	46 Watts	16-3/4"	21-3/16"	16-13/16"	8-1/8"	4-7/16"
AirGlow-24-4	05-0686 (4)	204.0 Watts	68 Watts	22-3/4"	27-3/16"	16-13/16"	8-1/8"	4-7/16"
AirGlow-30-4	05-0685 (4)	260.0 Watts	92 Watts	28-3/4"	33-3/16"	16-13/16"	8-1/8"	4-7/16"
AirGlow-36-4	05-1060-R (4)	348.0 Watts	112 Watts	34-3/4"	39-3/16"	16-13/16"	8-1/8"	4-7/16"
AirGlow-48-4	05-0576 (4)	476.0 Watts	160 Watts	46-3/4"	51-3/16"	16-13/16"	8-1/8"	4-7/16"
AirGlow-64-4	05-0690 (4)	620.0 Watts	216 Watts	62-3/4"	67-3/16"	16-13/16"	8-1/8"	4-7/16"

① Rated average lamp life is 13,000 hours.

② Total lamp watts.

③ Ultraviolet Output at 254 nanometers at 100 hours and 80° F (approximate).

④ Including flange.

⑤ See Figure 3 above for illustration of Partial Internal Mounting.

- 120 Volts 50/60 Hz and 230 Volts 50/60 Hz models are standard. Specify when ordering.
- Available in various voltages. Consult factory with specific power requirements.
- Models with other lamp sizes may be available. Consult factory with specific requirements.