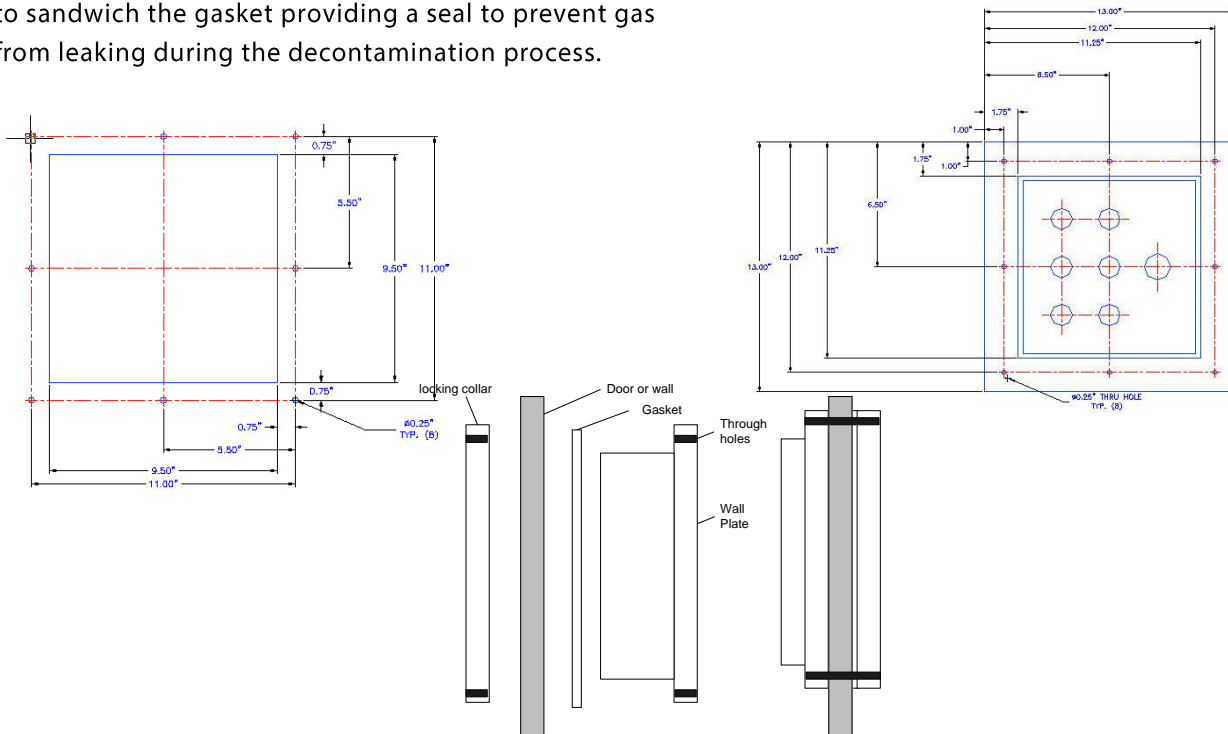


Providing you with gaseous chlorine dioxide solutions for your decontamination and sterilization needs

Door Plate

Description:

The Door Plate provides a method to connect ClorDiSys Solutions, Inc. gas generators to a room for quick easy connections. It is mounted through a door to the room to be decontaminated. The plate allows for quick valved tubing connections and quick connection of electrical connectors to measure and control the RH to either the Mindox or Cloridox systems. It comes in 2 versions; one with RH probe installed (PLAT-DOOR/RH-001) or without the RH probe (PLAT-DOOR-001). If using without RH probe then probe supplied with ClorDiSys Solutions, Inc. gas generator must be used. In addition to the Door Plate, a gasket and locking collar is provided to sandwich the gasket providing a seal to prevent gas from leaking during the decontamination process.



Product Number	Description
PLAT-DOOR/RH-001	Door Plate, RH Probe included.
PLAT-DOOR-001	Door Plate, RH Probe not included.